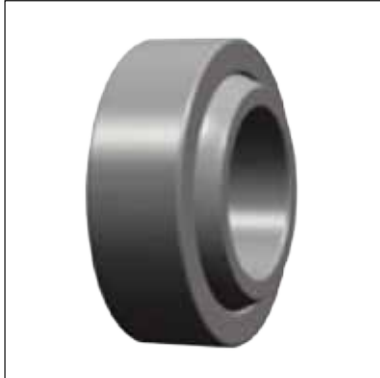


## SE-GE03 关节轴承 SE-GE03 Spherical plain Bearing



**Types: GE...C**  
**型号 GEG...C**

Number(型号)	Dimensions in MM									额定载荷KN Load Rating		重量
GE...C ,GEG...C	d	D	B	C	d <sub>k</sub>	r <sub>s</sub> min	r <sub>1s</sub> min	α ≈	动载荷 Dynamic	静载荷 Static	Weight (Kg)	
GE4C	4	12	5	3	8	0.3	0.3	16	2.1	5.4	0.003	
GE5C	5	14	6	4	10	0.3	0.3	13	3.6	9.1	0.005	
GE6C	6	14	6	4	10	0.3	0.3	13	3.6	9.1	0.004	
GE8C	8	16	8	5	13	0.3	0.3	15	5.8	14	0.008	
GE10C	10	19	9	6	16	0.3	0.3	12	8.6	21	0.011	
GE12C	12	22	10	7	18	0.3	0.3	10	11	28	0.015	
GE15C	15	26	12	9	22	0.3	0.3	8	18	45	0.027	
GE17C	17	30	14	10	25	0.3	0.3	10	22	56	0.041	
GE20C	20	35	16	12	29	0.3	0.3	9	31	78	0.066	
GE25C	25	42	20	16	35.5	0.3	0.6	7	51	127	0.119	
GE30C	30	47	22	18	40.7	0.3	0.6	6	65	166	0.163	
GEG 4C	4	14	7	4	10	0.3	0.3	20	3.6	9.1	0.005	
GEG 5C	5	16	9	5	13	0.3	0.3	21	5.8	14	0.008	
GEG 6C	6	16	9	5	13	0.3	0.3	21	5.8	14	0.006	
GEG 8C	8	19	11	6	16	0.3	0.3	21	8.6	21	0.014	
GEG 10C	10	22	12	7	18	0.3	0.3	18	11	28	0.021	
GEG 12C	12	26	15	9	22	0.3	0.3	18	18	45	0.033	
GEG 15C	15	30	16	10	25	0.3	0.3	16	22	56	0.049	
GEG 17C	17	35	20	12	29	0.3	0.3	19	31	78	0.083	
GEG 20C	20	42	25	16	35.5	0.3	0.3	17	51	127	0.153	
GEG 25C	25	47	28	18	40.7	0.6	0.6	17	65	166	0.203	
GEG 30C	30	55	32	20	47	0.6	0.6	17	83	212	0.304	