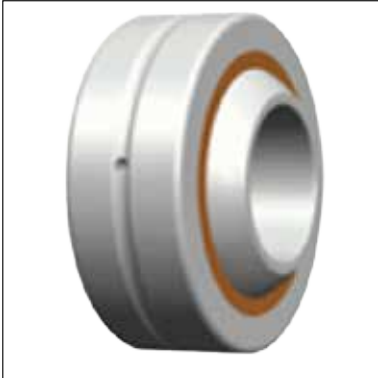


## SE-GE04 关节轴承 SE-GE04 Spherical plain Bearing



**Types: GEBK...S**  
**型号 GEBK...S**

Number(型号)	Dimensions in MM									额定载荷KN Load Rating		重量
GEBK...S	d	D	B	C	d <sub>k</sub>	r <sub>s</sub> min	r <sub>1s</sub> min	α ≈	动载荷 Dynamic	静载荷 Static	Weight (Kg)	
GEBK5S	5	16	8	6	11.112	0.3	0.3	13	3.3	7.8	0.009	
GEBK6S	6	18	9	6.75	12.7	0.3	0.3	13	4.3	9.8	0.013	
GEBK8S	8	22	12	9	15.88	0.3	0.3	14	6.8	16	0.024	
GEBK10S	10	26	14	10.5	19.05	0.3	0.6	14	10	23	0.039	
GEBK12S	12	30	16	12	22.23	0.3	0.6	13	13	31	0.058	
GEBK14S	14	34	19	13.5	25.4	0.3	0.6	16	17	40	0.084	
GEBK16S	16	38	21	15	28.58	0.3	0.6	15	21	50	0.111	
GEBK18S	18	42	23	16.5	31.75	0.3	0.6	15	26	61	0.16	
GEBK20S	20	46	25	18	34.93	0.3	0.6	15	31	73	0.21	
GEBK22S	22	50	28	20	38.1	0.3	0.6	15	38	88	0.26	
GEBK25S	25	56	31	22	42.86	0.6	0.6	15	47	110	0.39	
GEBK28S	28	62	35	25	47.63	0.6	0.6	15	59	138	0.53	
GEBK30S	30	66	37	25	50.8	0.6	0.6	17	63	148	0.61	